



**THE MUDHOOK YACHT CLUB
REGATTA 8-9th June 2019**



**Amendment No. L1 to Sailing Instructions
Issued 6 June 2019**

1. Delete the table after S5.5 and replace with the following

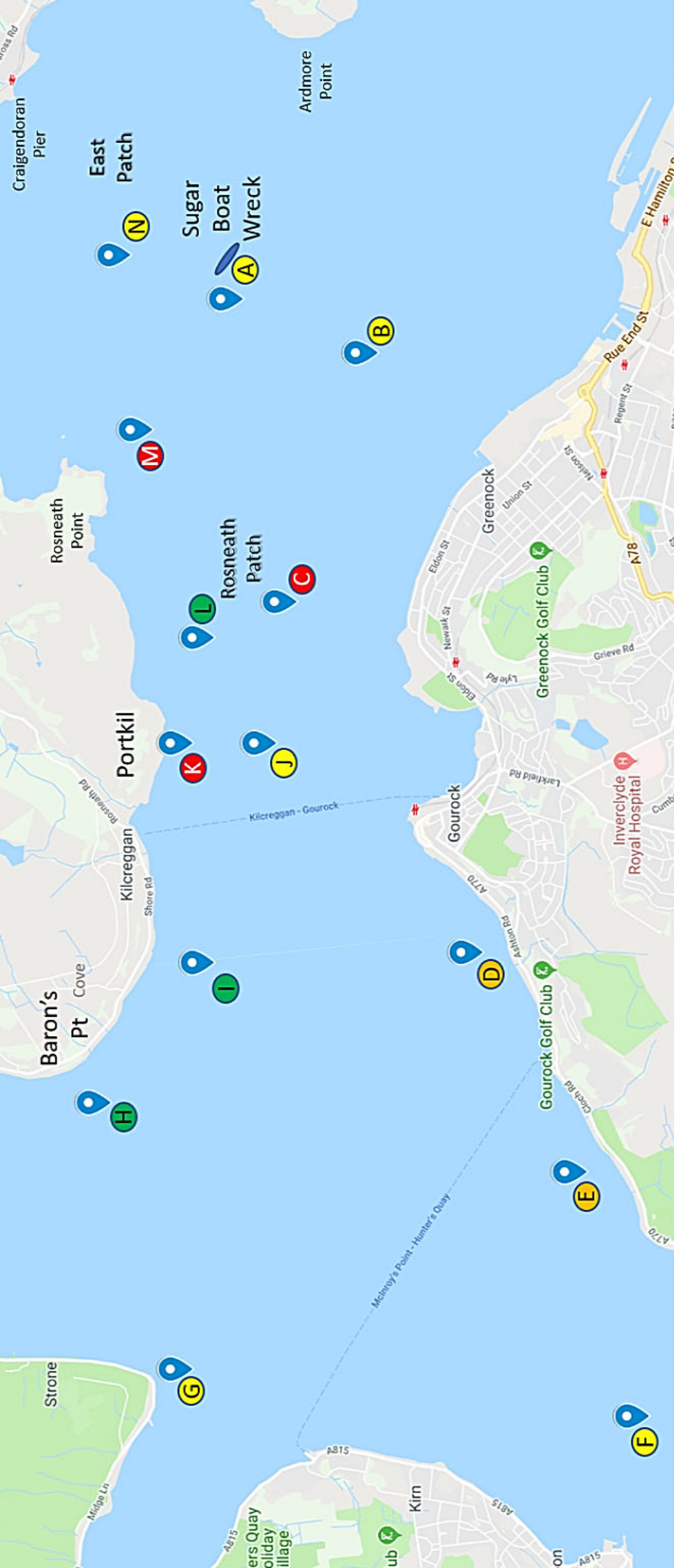
Class	Handicap	Class Flag	Starting order
MAKARS MASH RC35	1.015 to 1.040	Flag R	Start 1
Etchells	One design	Flag E	Start 2
CYCA	5-20 min per hour	Numeral Pendant 4	Start 3
Sigma 33	One design	Flag F	
Sonar	One design	Flag T	
Sonata	One design	Flag O	Start 4
Gareloch	One design	Flag G	Start 5

- 2. Addendum B (A) – Change Approximate Latitude to 55°58.6 from 58°58.6**
- 3. Addendum B (D) – Add “Marked with letter E”**
- 4. Addendum B (E) – Add “Marked with letter G”**
- 5. Insert the attached chartlet layout of marks for information only**

**Ian Macdonald
Race Officer**

**Ronnie Wilson
Sailing Secretary**

6 June 2019



	Description	Colour	Position	Approximate Latitude	Longitude	Description	Colour	Position	Approximate Latitude	Longitude
(A)	Wreck Buoy	YBY	Off Greenock	55° 58.6	04° 44.6	Nav Buoy KIL 3	G	Baron's Point	55° 59.2	04° 51.5
(B)	NATO Mooring/ A8	Y	Off Greenock	55° 57.9	04° 45.0	Nav Buoy KIL 1	G	Kilcreggan Channel	55° 58.7	04° 50.3
(C)	Nav Buoy #27	R	Rosneath Patch South	55° 58.3	04° 47.2	Outfall Buoy	Y	West of Rosneath Patch	55° 58.4	04° 48.4
(D)	Racing Mark (letter E)	O	Off RGYC	55° 57.4	04° 50.2	Nav Buoy ARD 4	R	Portkil Point	55° 58.8	04° 48.4
(E)	Racing Mark (letter G)	O	Off Levan, NE of Cloch Pt	55° 56.9	04° 52.1	Nav Buoy ARD 5	G	Rosneath Patch North	55° 58.7	04° 47.5
(F)	E Cardinal Buoy	BYB	Dunoon Bank	55° 56.6	04° 54.2	Nav Buoy ARD 10	R	SE of Rosneath Point	55° 59.0	04° 45.7
(G)	S Cardinal Buoy	YB	Strone Point	55° 58.8	04° 53.8	Pile Beacon 8N	Y	Off Helensburgh	55° 59.1	04° 44.2