

SATURN SAILS
MUDHOOK YACHT CLUB
REGATTA
12th-13th JUNE 2021
SAILING INSTRUCTIONS



The Organising Authority is the Mudhook Yacht Club.

S1 RULES

1.1 The Series will be governed by the rules as defined in *The Racing Rules of Sailing (RRS) 2021-2024*, the Prescriptions of the RYA, IRC Rules Parts A, B and C, the World Sailing Offshore Special Regulations (OSR), CYCA Handicap System and Class Rules for One Designs.

1.2 [DP] Competitors and support persons shall comply with any reasonable request from an event official. Failure to comply may be misconduct.

Reasonable actions by event officials to implement COVID-19 guidance, protocols, or legislation, even if they later prove to have been unnecessary, are not improper actions or omissions. This may include modifications to the Notice of Race and these Sailing Instructions

S2 NOTICES TO COMPETITORS

S2.1 Notices to competitors will be posted on the official Regatta Online Notice Board [RONB] on the event website www.mudhookyc.co.uk. It is the responsibility of competitors to check the RONB for any amendments to these sailing instructions.

S2.2 VHF announcements to competitors will be on VHF 77. Should VHF 77 be busy or otherwise unusable, VHF 72 will be used.

S3 SAILING INSTRUCTIONS

S3.1 Sailing Instructions (SIs) will be available on the event website www.mudhookyc.co.uk on or before 7th June. There will be no physical notice board.

S3.2 Any changes to these Sailing Instructions, will be posted on the RONB before 09.30 on the day they will take effect.

S3.3

Changes will also be indicated afloat by the PCV displaying Code flags A over L over the numeral pennant for the latest amendment from 09.30 until the time signal described in S9.2.

S3.4 Classes may be altered, amalgamated or divided at the discretion of the Race Committee. A decision on the split of classes for the first race on Saturday will be given with the list of entries and posted on RONB by 20.00 on Friday 11 June.

S4 COMMUNICATION

4.1 Communication will be by the Regatta Online Notice Board located on the website www.mudhookyc.co.uk. There will be no physical notice board.

4.2 [DP] All boats shall carry a VHF radio capable of communicating on channels M1, M2, 8, 72 and 77

4.3 [NP] The race committee may make broadcasts to competitors on VHF radio.

4.4 [DP] From the first warning signal until the end of the last race, except in an emergency, a boat shall not make voice or data transmissions and shall not receive voice or data communication that is not available to all boats.

S5 SCHEDULE OF RACES AND FLAGS

S5.1 The starting order may be changed at any time and will be announced on VHF.

S5.2 The event will consist of up to 5 races with three races planned for Saturday and two on Sunday.

Additional races may be sailed on either day, should the Race Committee deem this advisable at their sole discretion and these will be announced on VHF.

S5.3 The warning signal for the first race will be at 10.25 on each day. Second and subsequent race sequences will be signalled as soon as possible following the previous race.

S5.4 On Sunday 13 June, no warning signal will be made after 15.00.

S5.5 Class flags shall be displayed from the backstay (or from the starboard shroud for boats without backstays). One design classes need not display a class flag [DP].

Class	Handicaps	Class Flag(s)	Starting order	Fleet
IRC	IRC	Numeral Pendant 1	Start 1	White
Etchells	One design	Flag E	Start 2	White
CYCA	CYCA	Numeral Pendant 4	Start 3	Black
Sigma 33	One design	Flag F	Start 3	Black
2H with spinnakers	CYCA	Numeral Pendant 5	Start 3	Black
707	One design	Flag W	Start 4	Black
Gareloch	One design	Flag G	Start 5	Black

S6 RACING AREA

S6.1 Racing will be held in the Upper Firth of Clyde - East Patch Area. The start line will be within 5 miles of the entrance to Rhu Marina and its location will be broadcast on VHF from 09.30 each day.

S7 COURSES

S7.1 Courses will be set using the East Patch Racing course chart and other navigation marks. See the course chart at Appendix A and the course table at Appendix B.

S7.2 Courses from Appendix B

The courses to be sailed will be as described in Appendix B and will be signalled by course boards on the Committee Vessel.

S7.3 Alternative courses

If a board with letter T is displayed before the first warning signal for any race, the courses for that race will be round marks selected from those listed in Appendix B. Before the warning signal for the first start of that race the CV will announce a list of letters and numbers representing the marks to be rounded and their required side. When the CV has finished announcing the course, another official boat will be asked to repeat the course letters back to the CV for confirmation. Different courses may be set for different classes.

S8 MARKS

S8.1 The descriptions and approximate positions of fixed marks are shown in Appendix A.

S9 THE START

S9.1 Prior to the Warning Signal of its first class start each day, each boat shall identify itself to the race committee by passing, with its mainsail hoisted, the side of the principal committee vessel away from the start line.

S9.2 To alert boats that a race or sequence of races will begin soon, an orange flag will be displayed with one sound signal 5 minutes before the first warning signal is made.

S9.3 Races will be started by using RRS 26 with the warning signal made 5 minutes before the starting signal. The start signal for the first race will be the warning signal for the second race and so on.

S9.4 The starting line will be between an orange flag on the committee vessel and Mark Z..

S9.5 Boats whose warning signal has not been made shall keep clear of the starting area during the start sequence for other races. [DP]

S9.6 After a General Recall, the class involved will be restarted at the end of the start sequence. A subsequent class which has been recalled will restart after the new start of the previous recalled class. This changes RRS 29.2.

S9.7 If any boat is identified as On Course Side at the start, the race committee may broadcast on VHF the sail number. Failure to make a broadcast will not be grounds for redress. This changes RRS 62.1(a).

S9.8 A boat that does not start within 15 minutes after her starting signal will be scored Did Not Start without a hearing. This changes RRS A4 and A5.

S9.9 In the event of only one boat in any class appearing at the start line, no race will take place for that class and no points will be awarded.

S9.10 Altering RRS Rule 30.4, sail numbers for boats that have broken this rule will not be displayed but will be broadcast on VHF. It is the responsibility of competitors to monitor VHF for all starts when RRS 30.4 is in force.

S10 THE FINISH

S10.1 The finishing line will be between a blue flag on a committee vessel and the nearby finishing mark.

S11. PENALTY SYSTEM

11.1 The penalty for a breach of a Rule other than a rule of RRS Parts 1 and 2 may, at the discretion of the protest committee, be less than disqualification. This changes RRS 64.2.

11.2 The Two-Turns penalty shall be replaced by a One-Turn penalty (including 1 tack and 1 gybe). This changes RRS 44.1.

11.3 The Post-Race Penalty and RYA Arbitration of the RYA Rules Disputes Procedure shall apply (for full information on the procedures, go to www.rya.org.uk/go/rules). The outcome of an RYA Arbitration can be referred to a protest committee, but an arbitration cannot be reopened or appealed.

11.4 Physical protest hearings and RYA arbitration will take place, subject to COVID-19 social distancing restrictions, at a venue to be advised as required at or near Rhu Marina.

S12 ARBITRATION & PROTESTS

S12.1 Protests and requests for redress (forms available to download from www.mudhookyc.co.uk) must be submitted online via the RONB to the Race Office within 60 minutes of (a) the final boat finishing the last race of the day or (b) racing being abandoned for the day. Parties to a protest will be advised by email the location and time for the arbitration and/or hearing. Arbitration and/or Protest meetings will commence as soon as possible.

S12.2 Breaches of S9.5, 15 and 16.2 will not be grounds for protest by a boat. Penalties for these breaches may be less than disqualification if the Protest Committee so decides. The scoring abbreviation for a discretionary penalty imposed under this instruction will be DPI. [DP]

S12.3 On the last scheduled day of racing a request for reopening a hearing shall be delivered:

(a) within the protest time limit if the requesting party was informed of the decision on the previous day.

(b) no later than 30 minutes after the requesting party was informed of the decision on that day. This changes RRS 66.

S12.4 On the last scheduled day of racing a request for redress from a protest committee decision shall be delivered no later than 30 minutes after the decision was posted. This changes RRS 62.2.

S13 RESULTS AND SCORING

S13.1 Provisional and final results will be available as soon as possible after each race posted on the RONB at www.mudhookyc.co.uk. Results may also be sent by email to the address provided on the entry form.

S13.2 For all classes two completed races will constitute a series. When fewer than five races have been completed, a boat's series score will be the total of her race scores. When five races have been completed, a boat's series score will be the total of her race scores excluding her worst score.

S14 RISK STATEMENT

14.1 Rule 3 of the Racing Rules of Sailing states: "The responsibility for a boat's decision to participate in a race or to continue racing is hers alone."

See also World Sailing Offshore Special Regulations 2020-2021 1.02.

14.2 Sailing is by its nature an unpredictable sport and therefore involves an element of risk. By taking part in the event, each competitor agrees and acknowledges that:

a) They are aware of the inherent element of risk involved in the sport and accept responsibility for the exposure of themselves, their crew and their boat to such inherent risk whilst taking part in the event.

b) They are responsible for the safety of themselves, their crew, their boat, and their other property whether afloat or ashore.

c) They accept responsibility for any injury, damage or loss to the extent caused by their own actions or omissions.

d) Their boat is in good order, equipped to sail in the event and they are fit to participate.

e) The provision of a race management team, patrol boats, umpires and other officials and volunteers by the organiser does not relieve them of their own responsibilities.

f) The provision of patrol boat cover is limited to such assistance, particularly in extreme weather conditions, as can be practically provided in the circumstances.

g) It is their responsibility to familiarise themselves with any risks specific to this venue or this event drawn to their attention in any rules and information produced for the venue or event and to attend any safety briefing for the event.

h) They are responsible for ensuring that their boat is equipped and seaworthy to be able to face extremes of weather; that there is a crew sufficient in number, experience, and fitness to withstand such weather; and that the safety equipment is properly maintained, stowed and in date and is familiar to the crew.

S15 SAFETY REGULATIONS

S15.1 A boat retiring from a race shall notify the race committee by VHF as soon as possible. [DP]

S15.2 Attention is drawn to the International Regulations for the Prevention of Collision at Sea 1972. Particular notice shall be taken of Rule 9b which states "a vessel of less than 20 metres in length or a sailing vessel shall not impede the passage of a vessel which can safely navigate only within a "Narrow Channel or Fairway". Whilst racing or on passage in the Firth of Clyde north of Cumbrae Head, boats shall regard "Recommended Channels" marked as dotted lines on Hydrographic Office charts as a "Narrow Channel" within the meaning of the IRPCS 9b.

Furthermore, Clydeport Operations Limited has decreed that any waters of the Firth of Clyde where vessels by virtue of size, draught, speed or proximity to land, hazards and other vessels are unable to manoeuvre freely must be regarded as a "Narrow Channel". This also applies in waters of the Queen's Harbour. Clyde Operations Limited waters are to the south and west and Queen's Harbour waters to the north of a line from Rosneath Point to a point approximately halfway between Craigendoran Pier and Ardmore Head. (Admiralty Chart 1994 refers)

Whilst racing any boat which is unable, for reasons of lack of wind or other cause, to sail clear of a large power-driven vessel shall start her engine and/or paddle in order to clear and thereafter shall report full details to the Race Committee. (DP)

Competitors are reminded of the Clydeport Operations Limited Byelaw which prohibits boats and other craft from manoeuvring within 100 metres of any ferry terminal. **Particular regard shall be paid to this when in the vicinity of the Clyde Marine Services at Helensburgh, Kilcreggan and Gourock.**

The Restricted Channel into Gareloch, off Helensburgh Sailing Club and extending to the southern limit of the Queen's Harbour may be closed by the Queen's Harbourmaster for the passage of large vessels.

Military vessels routinely transit the race area and can be accompanied by a security escort. Boats and support boats should not shape a course to approach any military vessel or in any case pass closer than 200m to a warship or 400m to a surfaced submarine nor should high speed support boats shape a course, at speed, in the direction of a military vessel. The escorting security forces, if they consider any vessel is approaching a military vessel, will intercept and warn her to keep clear.

The Regulations require all vessels to keep a listening watch on VHF Channel 16.

S16 OFFICIAL BOATS

S16.1 For purpose of identification, Committee vessels will display International Code Flag J. Committee vessels may not be at anchor, and their ability to manoeuvre may be restricted. In addition to Code Flag J the vessel may display the appropriate signal prescribed by the International Regulations for the Prevention of Collisions at Sea, Rule 27(b)(ii).

The term Committee Vessel includes any dinghy, RIB or buoy attached to the main vessel.

S16.2 Boats shall not come within 10 metres of any committee vessel flying flag J, unless that committee vessel is flying flag M. [DP]

S17 INSURANCE

Each participating boat shall be insured with valid third-party liability insurance with a minimum cover of £3,000,000 per incident or the equivalent.

S18 PRIZES

S18.1 No physical Prize Giving is scheduled, however this will be updated by Friday 11th June on the RONB. A list of prize winners will be posted on the RONB as soon as possible after the last race.

Mudhook Yacht Club trophies, as follows, will be awarded to Class winners to be held until the following year's regatta. Depending on the final division of classes the allocation of trophies to classes may be changed at the discretion of the Organising Authority:

IRC Class	Inglis Trophy
CYCA Class	Wylie Trophy
Etchells Class	Vice Admiral's Trophy
707 Class	Mudhook Salver

If there is no Prize Giving prizes will be distributed after the regatta.

S18.2 A keeper prize will be awarded to the overall winner and, depending on the number of starters, the runner up in each class. When classes are amalgamated prizes will be awarded at the discretion of the Race Committee. Saturn Sails prizes will also be awarded.

S19 Data Protection

19.1 The personal data you provide to the organising authority will be used to facilitate your participation in the event. If you have agreed to be bound by the Racing Rules of sailing and the other rules that govern the event (the rules), the legal basis for processing that personal data is contract. If you are not bound by the rules the legal basis for processing that personal data is legitimate interest. Your personal data will be stored and used in accordance with the OA's privacy policy. When required by the rules, personal data may be shared with the RYA, your national authority and/or World Sailing. The results of the event and the outcome of any hearing or appeal may be published.

19.2 Rights to use Names and Likenesses.

Competitors automatically grant to the Organising Authority, without payment, the right in perpetuity to make, use and show any photographs, motion pictures and live, taped, or filmed television of, or relating to, the event.

MUDHOOK YC REGATTA 2021
APPENDIX B TO SIs - COURSE TABLE

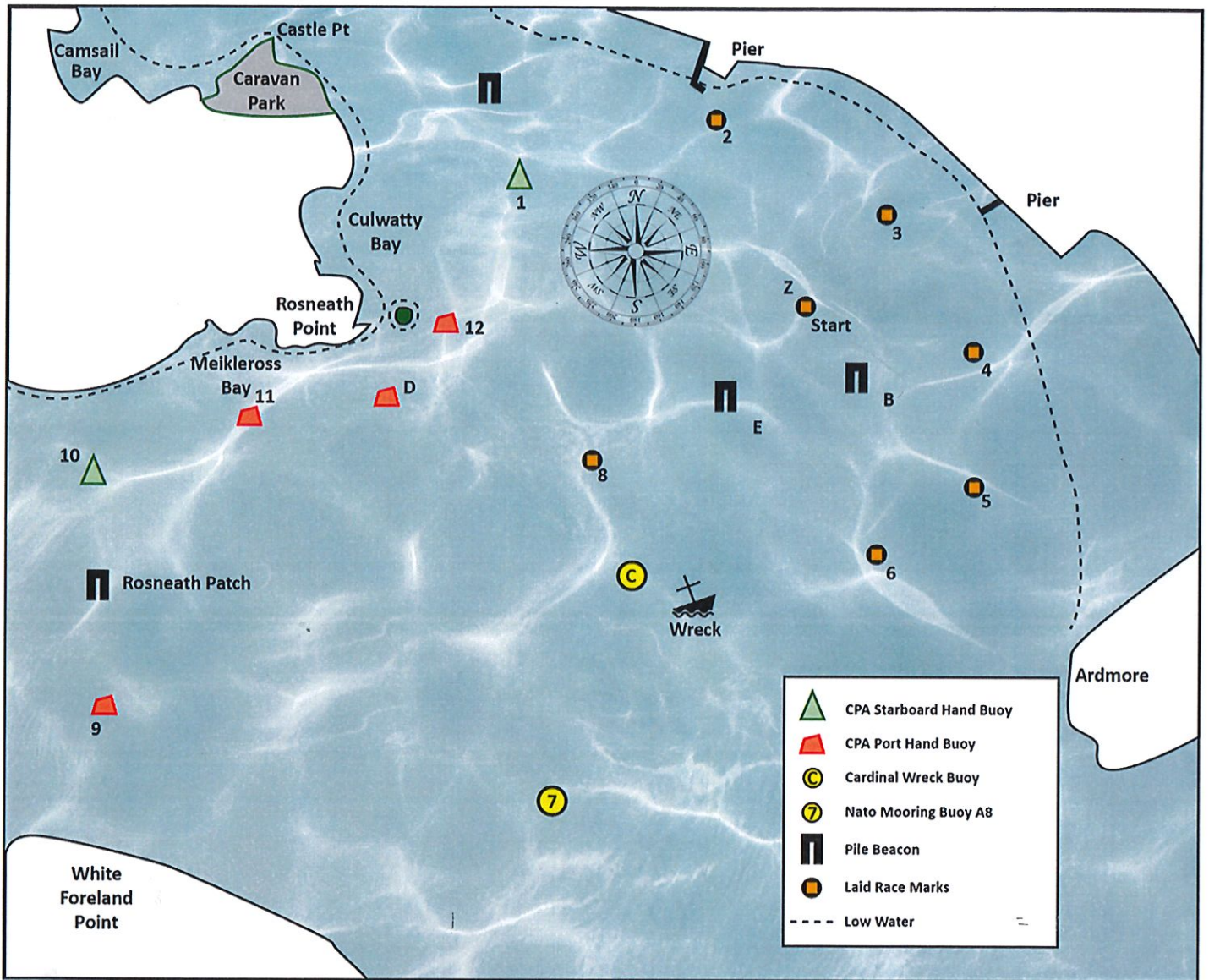
Course letter displayed	Wind direction (approx)	Round	Course marks	Approx distances (nm)
A	N	1	2 12 7 8	3.1
		2	7 8	2.0
		3	2 8 6 Z	2.6
		4	2 6 Z	1.6
		5	2 E Z	1.4
B	NE	1	3 12 7 Z	4.3
		2	7 Z	2.8
		3	3 12 8 3	3.2
		4	8 3	1.6
		5	8 3	1.6
C	E	1	4 2 11 Z	4.5
		2	4 12 Z	3.1
		3	4 3 D B	3.3
		4	D B	2.1
		5	8 B	1.5
D	SE	1	5 3 1 Z	3.2
		2	5 1 Z	3.0
		3	5 B 12 6	2.8
		4	8 6 E	1.8
		5	6 E	1.1
E	S	1	6 4 2 8	3.3
		2	7 8	2.0
		3	6 4 2 Z	3.1
		4	B 2 Z	1.6
		5	B 2 Z	1.6
F	SW	1	C 7 6 3	4.0
		2	2 12 Z	2.6
		3	C B 3 E	2.7
		4	3 E	1.5
		5	3 E	1.5
G	W	1	11 6 4 Z	4.6
		2	12 4 Z	4.2
		3	D C B	2.4
		4	D B	2.0
		5	8 B	1.0
H	NW	1	1 12 5 Z	3.6
		2	1 5 Z	3.0
		3	1 8 6 8	3.2
		4	6 8	1.4
		5	6 8	1.4

NOTES:

1. White Fleet sail rounds 1, 2 and 2. Black Fleet sail rounds 3, 4 and 5
2. If letter T is displayed before the course letter, White Fleet sail rounds 1 and 2; Black Fleet sail rounds 3 and 5.
3. All marks to be left to PORT
4. Yachts shall not pass between the committee vessel and Mark Z except at the start and when Mark Z is being used as a rounding or finishing mark.
5. There is shallow water immediately inshore of Marks 2, 3, 4 and 5
6. When Mark 12 (ARD 24) is not being used as a mark of the course, it shall be left on the proper hand

APPENDIX A

EAST PATCH RACING AREA COURSE CHART



MARKS AND DESCRIPTIONS

- | | |
|-------------------------------|------------------------------------|
| 1. Nav. Buoy "Row" Green | 10. Nav. Buoy ARD 5 Green |
| 2. Laid mark, yellow/black | 11. Nav Buoy ARD 8 Red |
| 3. Laid mark, yellow/black | 12. Nav. Buoy No. 24 Red |
| 4. Laid mark, yellow/black | Z. Laid start/finish line mark |
| 5. Laid mark, yellow/black | B. Pile Beacon, Yellow (East) |
| 6. Laid mark, yellow/black | C. Wreck Buoy, Yellow/Black/Yellow |
| 7. Nato Buoy A.8 Large Yellow | D. Nav. Buoy ARD 10 Red |
| 8. Laid mark, yellow/black | E. Pile Beacon, Yellow (West) |
| 9. Nav. Buoy No. 27 Red | |

NB (a) When it is not a mark on the course, Nav. Buoy No. 24 Red (Mark 12) must be left on the proper hand.
 (b) Laid marks Nos. 2-6 inclusive are black marks unlike any other in the area.